

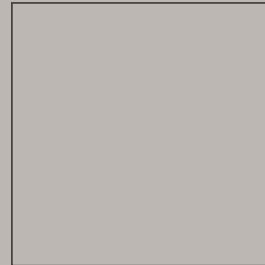
BETON

**GRESART.**   
C E R A M I C T I L E S



# BETON

GLAZED PORCELAIN TILES \_GRÉS PORCELÂNICO VIDRADO \_GRÈS CÉRAME ÉMAILLÉ  
 FEINSTEINZEUG GLASIERT \_GRÉS PORCELÁNICO  
 EN 14411:2016 GROUP \_GRUPO \_GROUPE \_GRUPPE **Bl**



90X90 / 36"X36"

▼  
9.5 MM  
▲



60X120 / 24"X48"

▼  
8.8 MM  
▲



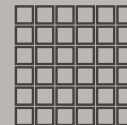
60X60 / 24"X24"

▼  
7.8 MM  
▲



30X60 / 12"X24"

▼  
7.8 MM  
▲



MOSAICO 4,7X4,7  
30X30



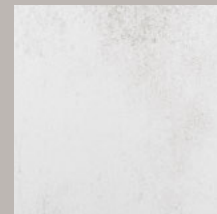
MOSAICO LOSANGO  
23,6X28



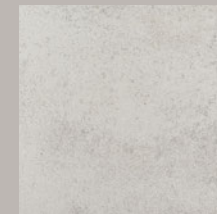
MOSAICO HEXAGONAL  
26X31,5

## USAGE \_USO

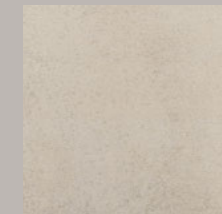
WALL, FLOOR, INTERIOR, EXTERIOR, COMMERCIAL, RESIDENTIAL



BETON WHITE



BETON FOG



BETON NUT



BETON SMOKE

BETON FOG 60X60





BETON FOG 60X120



BETON FOG 60X60  
BETON HIDRÁULICO 60X60





BETON NUT 60X60  
BETON HIDRÁULICO 60X60  
BRICK CASTANHO 33X47



BETON NUT 60X60  
BETON HIDRÁULICO 60X60  
BRICK CASTANHO 33X47



BETON NUT 60X60





BETON NUT 60X60



BETON NUT 60X60







BETON SMOKE 60X60



BETON SMOKE 60X60

# BETON

 GLAZED PORCELAIN TILES \_GRÉS PORCELÂNICO VIDRADO \_GRÉS CÉRAME ÉMAILLÉ  
 FEINSTEINZEUG GLASIERT \_GRÉS PORCELÁNICO  
EN 14411:2016 GROUP \_GRUPO \_GROUPE \_GRUPPE B1



BETON WHITE  
GP 0438



BETON FOG  
GP 0439



BETON NUT  
GP 0440

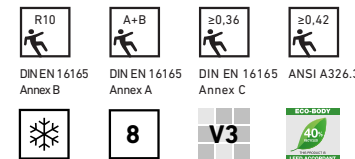


BETON SMOKE  
GP 0441

## SURFACE \_SUPERFÍCIE

MATT  
SEMI-POLISHED (SP)

## FEATURES \_ATRIBUTOS



## FINISH \_ACABAMENTO

NATURAL (NAT)  
RECTIFIED (R)

## SIZES \_FORMATOS

90X90 R  
90X90 SP  
60X120 R  
60X60 R  
60X60 NAT  
30X60 R

# BETON HIDRÁULICO

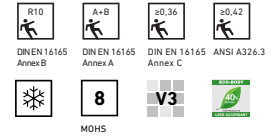
 GLAZED PORCELAIN TILES \_GRÉS PORCELÂNICO VIDRADO \_GRÈS CÉRAME ÉMAILLÉ  
 FEINSTEINZEUG GLASIERT \_GRÉS PORCELÁNICO  
EN 14411:2016 GROUP \_GRUPO \_GRUPE \_GRUPPE BIa



SURFACE \_SUPERFÍCIE

MATT

FEATURES \_ATRIBUTOS



FINISH \_ACABAMENTO

NATURAL (NAT)

SIZES \_FORMATOS

60X60 NAT

BETON HIDRÁULICO DECOR  
GP 0468

PEÇAS EMBALADAS ALEATORIAMENTE POR CAIXA  
TILES ARE PACKED RANDOMLY IN THE SAME BOX




# SUSTAINABILITY



WE MEET  
**LEED™ AND BREEAM®**  
REQUIREMENTS

Dynamic Product, references of EPREVA:	% recycled material included	Source:
Floor tiles: Glazed ceramic, Glazed porcelain	20-27%	Internal quality data: internal wastes from the process
Wall tiles: White body, Monoporena	28%	External data: external wastes




**ECO-BODY**



28%  
RECYCLED

THIS PRODUCT IS  
**LEED ACCORDANT**

**ÉMISSIONS DANS L'AIR INTÉRIEUR\***



**A+**

A+ A B C

**GRÉS PORCELÂNICO • GLAZED PORCELAIN  
GRÈS CÉRAME • FEINSTEINZEUG**



DIN EN 16165  
Annex B



DIN EN 16165  
Annex A



DIN EN 16165  
Annex C



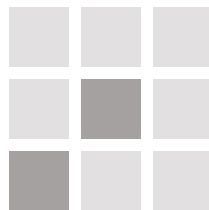
ANSI A326.3



MOHS

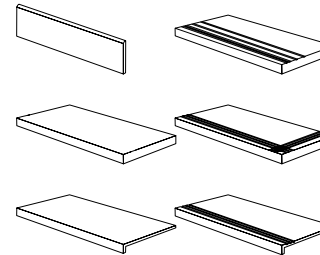


**VARIAÇÕES DE TONALIDADE • VARIATION IN TONE  
VARIATIONS DE TONALITÉ • FARBABWEICHUNGENN**



**V3**

Aleatória • Random • Aleatoire • Warnung



SKIRTINGS \_RODAPÉ 9X90

SKIRTINGS \_RODAPÉ 9X120

SKIRTINGS \_RODAPÉ 9X60

STEP \_DEGRAU 45X90

STEP \_DEGRAU 60X120

STEP \_DEGRAU 60X60

STEP \_DEGRAU TEC. 30X90

STEP \_DEGRAU TEC. 30X120










STEP \_DEGRAU TEC. 30X60

Gresart - Cerâmica Industrial S.A.  
Apartado 39 - EC de Oliveira do Bairro | 3771-954 Oliveira do Bairro | Portugal  
Tel. +351 234 740 200 | Fax. +351 234 747 462  
gresart@gresart.com | www.gresart.com



TECHNICAL DATA

Grés Porcelânico Vidrado  
Glazed Porcelain Tiles  
Grés Cérame Émaillé  
Feinsteinzeug Glasiert  
Grés Porcelánico

EN 14411:2012	Características Técnicas Technical Data Caractéristiques Techniques Technische Daten Datos Técnicos	Norma de Ensaio Test Norm Norme du Test Testnormen Norma de Prueba	Anexo • Annex Annexe • Anhang  Grupo • Group Groupe • Gruppe	Garantido Guaranted Garanti Gewährleistet Garantizado
	Comprimento e Largura Length and Width Longueur et Largeur Länge und Breite Longitud y Anchura		± 0,6 %	
	Espessura Thickness Épaisseur Dichte Grosor		± 5 %	Garantido Guaranted Garanti Gewährleistet Garantizado
	Rectilinearidade das Arestas Edge Warpages Rectitude des Arêtes Geradlinigkeit der Kanten Rectitud de los Bordos	EN ISO 10545-2	± 0,5 %	Garantido Guaranted Garanti Gewährleistet Garantizado
	Medida da Ortogonalidade Rectangularity Angularité Rechtwinkligkeit der Kanten Grado de Ortogonalidad		± 0,5 %	Garantido Guaranted Garanti Gewährleistet Garantizado
	Medida da Planaridade Surface Flatness Planéité de la Superficie Ebenfächigkeit Medición de Planaridad		± 0,5 %	Garantido Guaranted Garanti Gewährleistet Garantizado
	Absorção de Água Water Absorption Absorption D'eau Wasseraufnahme Absorción de Agua	EN ISO 10545-3	$E_b \leq 0,5\%$	Garantido Guaranted Garanti Gewährleistet Garantizado
	Resistência à Flexão Breaking Strength Résistance à la Flexion Biegefestigkeit Resistencia a la Flexión	EN ISO 10545-4	$\geq 35 \text{ N/mm}^2$  $\geq 1300 \text{ N}$	Garantido Guaranted Garanti Gewährleistet Garantizado
	Resistência à Abrasão Resistance to Abrasion Résistance à L'abrasion Abnutzungsbeständigkeit Resistencia a la Abrasion	EN ISO 10545-7	Segundo os Valores do Fabricante According to Manufacturer Requirements Selon les Valeurs du Fabricant Gemäss der Werte des Herstellers Según los Valores del Fabricante	Indicação na Tabela de Preços Indication on Price List Indication sur la Liste de Prix Hinweis auf der Preisliste Indicación en la Tabla de Precios
	Resistência ao Choque Térmico Resistance to Thermal Shock Résistance aux Chocs Thermiques Resistenz Gegen Thermischen Schock Resistencia ao Choue Térmico	EN ISO 10545-9	Exigido Required Exigée Gefordert Exigido	Garantido Guaranted Garanti Gewährleistet Garantizado
	Resistência ao Fendilhamento Cracking Resistance Résistance aux Tréssaillures Abnutzungsbeständigkeit Resistencia a lo Agrietado	EN ISO 10545-11	Exigido Required Exigée Gefordert Exigido	Garantido Guaranted Garanti Gewährleistet Garantizado
	Resistência ao Gelo Frost Resistance Résistance au Gel Frostbeständigkeit Resistencia al Hielo	EN ISO 10545-12	Exigido Required Exigée Gefordert Exigido	Garantido Guaranted Garanti Gewährleistet Garantizado
	Resistência aos Ácidos e Bases Resistance against Acids and Bases Résistance aux Acides et Bases Beständigkeit Gegen Säuren u Laugen Resistencia a los Ácidos y Bases	EN ISO 10545-13	Segundo os Valores do Fabricante According to Manufacturer Requirements Selon les Valeurs du Fabricant Gemäss der Werte des Herstellers Según los Valores del Fabricante	Mínimo: GLB Minimum: GLB Minimum: GLB Minimum: GLB Minimum: GLB
	Resistência aos Produtos de Limpeza Domésticos Resistance to Household Cleaning Products Résistance aux Produits Ménagers de Nettoyage Beständigkeit Gegen Haushaltsprodukte Resistencia a los Productos de Limpieza Domésticos		Mínimo: GB Minimum: GB Minimum: GB Minimum: GB Minimum: GB	Garantido Guaranted Garanti Gewährleistet Garantizado
	Resistência às Manchas Staining Resistance Résistance aux Taches Beständigkeit Gegen Flecken Resistencia a las Manchas	EN ISO 10545-14	Mínimo: Classe 3 Minimum: Class 3 Minimum: Classe 3 Minimum: Klasse 3 Minimum: Clase 3	Garantido Guaranted Garanti Gewährleistet Garantizado

**GRESART.**   
C E R A M I C T I L E S